



Ensemble Theatre

Great Scripts. Cleveland Artists

:: Lucia Colombi, Founder :: Celeste Cosentino, Executive Artistic Director ::



Ensemble Theatre

Presents a **staged reading** of

IN THE STILL OF THE NIGHT

A new play by **Molly McFadden**

May 21, 2022 @6pm

At **HEIGHTS ARTS** | 2175 Lee Rd. Cleveland Hts. 44118

This event is free but seats are limited.

Email tickets@ensemble-theatre.org to reserve a spot!

A disgruntled cop and a whimsical woman meet and find they have so much in common. Will they cross the finish line of life? Throughout the play they come to realize that they are two lost souls just trying to find meaning and a sense of purpose in their lives. They have both gone through a difficult period, she is on the street due to the pandemic and he is trying to help her out.

They discover they have something in common and they are trying to find a way to exist on their own terms instead of the terms imposed on them by society. Their relationship is based on helping each other find a course to follow in their lives. They become very involved in the other person's problems and as a result they are surprised and discover that despite the age difference they just might have a reason for living and succeed in moving forward to do just that.....cross the finish line of life.

As part of Ensemble's mission, our **Stagewrights Unit** fosters the development of new works for the stage. Staged readings offer playwrights the platform to have their work presented to an audience with local artists. We encourage audiences to **participate in survey questions** provided by the playwright as well. Audiences are fundamental to our work! Thank you for being a part of the new play process!

Please visit this link :: <https://forms.gle/tjBbu9Yz7kggiX357> :: to fill out a short survey if you are able!



:: Presents a staged reading of **Molly McFadden's** new play
:: IN THE STILL OF THE NIGHT ::

CAST OF CHARACTERS

Maggie McGinnis :: Christina Courtenay
Greg Hellman :: Darryl Tatum
Cashier :: Cat Kenney
Customer :: Dominic Zoeller

PLACE

:: Various locations in Cleveland ::

TIME

:: Present Day ::

PRODUCTION CREW

Playwright :: Molly McFadden
Stage Manager :: Becca Moseley
Director: Celeste Cosentino

Follow Us:

Facebook @EnsembleTheatreCleveland :: **Twitter** @EnsembleCLE :: **Instagram** @ensembletheatreCLE



:: Meet The Artists ::



Molly McFadden (*Playwright*) For the last 6 years while living in Cleveland, OH Molly has performed in a variety of venues as a singer and performer. But, as Molly will tell you as of late, she has been focusing on her writing. She is driven and what is now her new chapter of her life, other than enjoying her life with her husband and daughter; it is that which keeps her going of late. She is grateful for Stagewrights and Ensemble and tonight she is thrilled to present her latest work, "*In the Still of the Night*". This is her fourth play she has come away with from this group. She had with *Fish Feel Pain* and then moved on to *Living on the Moon* about her journey with her mother followed by *Cease Not to Think of Me* then to *The Downside* which will soon have a full production this summer and now, *In the Still of the Night*. Molly is not done. She has found her voice and passion and she realizes that as she writes her plays bringing life to her characters, she, like so many writers, is driven because for her she does so for a reason. Tonight perhaps you will discover what that reason is. Tennessee Williams, O'Neill and even Sondheim did. What do you think it is that makes her write. Well she knows, do you? Hope you enjoy the play.



Christine Courtney (*Maggie McGinnis*) is a firm believer that life is too short to pass up an adventure, so Chris took up the opportunity to help with the development of new plays coming out of Ensemble Theater's StageWrights group. There she met Molly McFadden when Molly brought in a few pages to be read and pulled a puppet from her purse. A year later *Living on the Moon* was born. She directed *Living on the Moon* in a longer version down at Cleveland Public Theater and was a frequent reader at Ensemble's Wednesday night playwriting group, online. This single group of friends was a bright spot in an otherwise lonely and dull life. To the whole group Chris says, "Thank you! See you Wednesday." As a child, Courtenay saw the 1954 live television production of Mary Martin's *Peter Pan* and was immediately transformed into an 8 year old theater fanatic. A backyard version of the play in Laguna Beach, Ca. earned her a first glowing review written by a columnist neighbor in the Los Angeles Times. Thus, bitten by the bug, she earned a BA and later an MA in Theatre-(Directing Emphasis) at SDSU where she also taught acting. She proceeded to perform/direct in area theaters over the next 40 years in San Diego, Ca. and the Charlottesville, Va. region of the Blue Ridge mountains where she and her husband Jim had a small horse farm. She moved to Cleveland a few years ago to be near their daughter Liz and her family. Some favorite acting roles over the years include Lear in *King Lear*, Bananas in *The House of Blue Leaves* and Betty Yarn in *Landscape of the Body*. She has been privileged to direct plays written by Tony Kushner, Caryl Churchill, Charles L. Mee, Paula Vogel, John Guare, Michael Frayn, Craig Lucas., Liz Duffy Adams, David Lindsay-Abaire and now, Molly McFadden. Thanks for the journey, Molly.



Darryl Tatum (*Greg Hellman*) has performed in some religious based theatre through the years plays including *The Old Rugged Cross*, *Will You Be Ready*, *An Encounter with Jesus*, *Desire and Desire2*, *Whisperers*, *Gi Gi*, *Hosea*, *Things Aren't Always What They Seem*, *Sister I'm Sorry*, *Tell Hell I Ain't Coming* etc... He has been involved in theatre at Garden Valley Neighborhood House performing in *Jitney*, *Can I Speak to AI* at the East Cleveland Community Theatre, *Radio Golf* at the Ensemble Theatre and *Fences* at the Aurora Community Theatre along with *Driving Miss Daisy*. He also performed *Fences* at the Karamu House along with *One Monkey Don't Stop No Show*, *God's Trombones*, *John Henry* (Youth Theater) *Romeo and Juliet: An African Love Story*, *Paradise Blue*, *Greenwood: An American Dream Destroyed* and *Ma Rainey's Black Bottom*. Darryl has been in a few local movies: *Swing Lowe Sweet Chariote*, *Height Girl*, *Height Girl 2*, *Hey, Mr. Postman*, *Caleb a living Miracle* and *Stand Alone*.

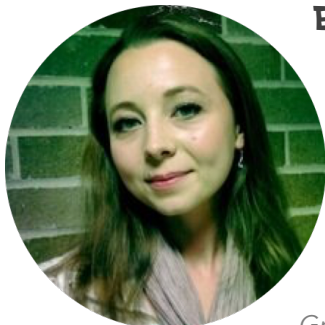


Dominic Zoeller (*Customer*) is happy to be working with Stagewrights on the presentation of "In the Still of the Night" by Molly McFadden. Dominic has spent most of his time in musical theater in Mid-Michigan (including "*Scratch the Musical*" as Daniel Webster, "*Ragtime*" as Tateh, "*Joseph and the Amazing Technicolor Dreamcoat*" as Isachar and the Butler and "*Les Miserables*" as Jean ValJean). Since moving to Ohio in the midst of a pandemic he has enjoyed the role of George Bailey in "*It's a Wonderful Life*" and bringing characters to life for some very talented playwrights in Stagewrights, a workshop sponsored by Ensemble Theater of Cleveland. Dominic is married to his lovely wife Amanda and together they have two amazing daughters, Shelby and Morgan.



Cat Kenny (*Cashier*) has done some work at Clague, Porthouse, CPT, Dobama, Spotlights, Playwrights' Local, convergence-continuum, and Cleve Shakes. Probably some other places too. She has also written a few pieces of her own! Thank you for supporting live theatre and the presenting of new work!

:: AND MEET THE ENSEMBLE CREW ::



Becca Moseley (*Stage Manager/General Manager*) Becca is excited to be back for another Ensemble production. She has served as the Resident Production Stage Manager/Assistant stage manager for many Ensemble shows, including both parts of *Angels in America*, *Radio Golf*, *The Penelopiad*, *Intimate Apparel*, *The Night Thoreau Spent in Jail*, *Bengal Tiger at the Baghdad Zoo*, *the Iceman Cometh*, *Knock Me A Kiss*, *Anna Christie*, *Thurgood*, *Death of a Salesman*, and *Slow Dance on the Killing Ground*. She co-directed *Run, Kingsbury, Run* and recently Assistant Directed *East of Eden*. She was onstage in past seasons at Ensemble as a chorus leader/puppeteer in *Around the World in 80 Days*, *Pea in Jerusalem*, the Childlike Empress/company in *The Never Ending Story*, *The Phantom Tollbooth* (Princess Rhyme/Ensemble,) and as Daisy Buchanan in *The Great Gatsby*. Other favorite credits not at Ensemble include *Rosalind (As You Like It)*, *Fabiana*

Cunningham (The Last Days of Judas Iscariot), *Dorine (Tartuffe)*, *Maggie (A Chorus Line)*, and *Ophelia (The Horatio Project)*. She thanks Ian and Celeste for building and nurturing a theatre that provides a constant supply of great scripts and people to bring them to life, her family for their love and support, and her husband Kyle for always believing in the magic.



Celeste Cosentino (*Executive Artistic Director/Director*) has served as an artistic associate and operations manager or in some "role" for Ensemble Theatre since she could walk.

She has served in one capacity or another for local Cleveland theaters her entire life, spending many formative years "in the house" while her mother, Lucia Colombi, was interim artistic director for Karamu in the early to mid 80's, the same years her mother spent founding Ensemble Theatre. She is well known and respected in the Cleveland Theatre Community having worked with The Cleveland Play House, Dobama Theatre, Clague Play House, Cain Park, Bang & Clatter, Willoughby Fine Arts and Weathervane Playhouse. She is a graduate of the Ohio University School of Theatre and returned to Cleveland in 2008, after living and working in New York City. Some of her favorite acting credits are *Marela in Anna in the Tropics*, *Alice in Closer*, *Desdemona in Othello*, and *Kayleen in Gruesome Playgound Injuries*. Favorite directing credits include

The Gospel According to James, *Death of a Salesman*, *Lower Ninth*, *Animals out of Paper*, *Bengal Tiger at the Baghdad Zoo*, *The North Pool*, both parts of Tony Kushner's epic *Angels in America*, and most recently *A Rasin in the Sun*, *By The Bog of Cats*, and *The Penelopiad*! Celeste also spent some time in the corporate/business management world and worked for the Cleveland Museum of Art in their groundbreaking ARTLENS technology gallery for almost a decade. She has also recently stepped into the role of Interim Director of Theatre Studies at Notre Dame College in South Euclid! Celeste is the daughter of Ensemble Founder, Lucia Colombi and has returned home to support her mother's mission by providing a fresh perspective as the next Artistic Director. She was raised by Ensemble Theatre and has special dedication to its continuation for many years to come.

Ensemble is graciously supported by:

PAUL M. ANGELL
FAMILY FOUNDATION

Ohio Arts
COUNCIL

FIDELITY Charitable™
Make more of a difference

RAUSCHENBERG
Robert Rauschenberg Foundation

The Cyrus Eaton Foundation
The Cyrus Eaton Foundation

Jewish Federation
OF CLEVELAND

THE CHAR AND CHUCK
FOWLER FAMILY FOUNDATION

cuyahoga
arts & culture

The Harry K. Fox & Emma R. Fox
Charitable Foundation

CLEVELAND
Foundation

& Donors Like YOU!

Consider some of the many ways **you** can help us here at Ensemble!

A significant portion of our funding are matching grants. Please consider a **matching donation**.

YOUR donation can be **MATCHED DOLLAR FOR DOLLAR** by many of the foundations we reach out o for support.

You can donate online visit : www.ensembletheatre.org - Support Tab

You can also donate your time! Please contact us if you would like to donate your time!
216.321.2930 :: volunteer@ensemble-theatre.org :: We would love to have you!

Email us regarding how you can help with benefits, matching grants, sponsorships, volunteering and more!

A heartfelt **Thank you** and continued gratitude to those who have supported us through the COVID-19 pandemic!
Stay tuned for updates on programming as we continue to navigate getting back to "normal".

Please continue to stay safe, stay healthy and take care of one antoher!!

Thank you for joining us virtually tonight and we look foward when we can all meeting again in person!

:: Just a reminder (again) for our staged reading ::

Please if you can visit this link :: <https://forms.gle/tjBbu9Yz7kggiX357> :: to fill out a short survey if you are able!

Ensemble Theatre

is excited to announce a 22/23 season in a new home!

Stay tuned for this exciting announcement!



Ensemble Theatre

Great Scripts. Cleveland Artists

www.ensembletheatre.org